



GMT MONTHLY MEMBERSHIP PROGRESS REPORT

Results as of: 1/31/2018

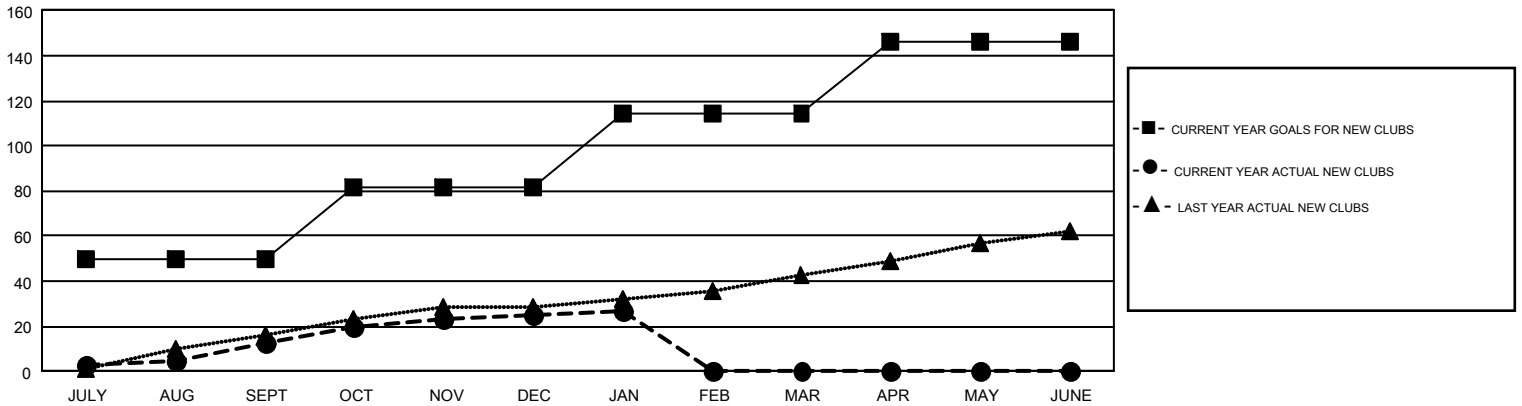
GAT Constitutional Area 7

REPORT DOES NOT INCLUDE CLUBS IN UNDISTRICTED AREAS.

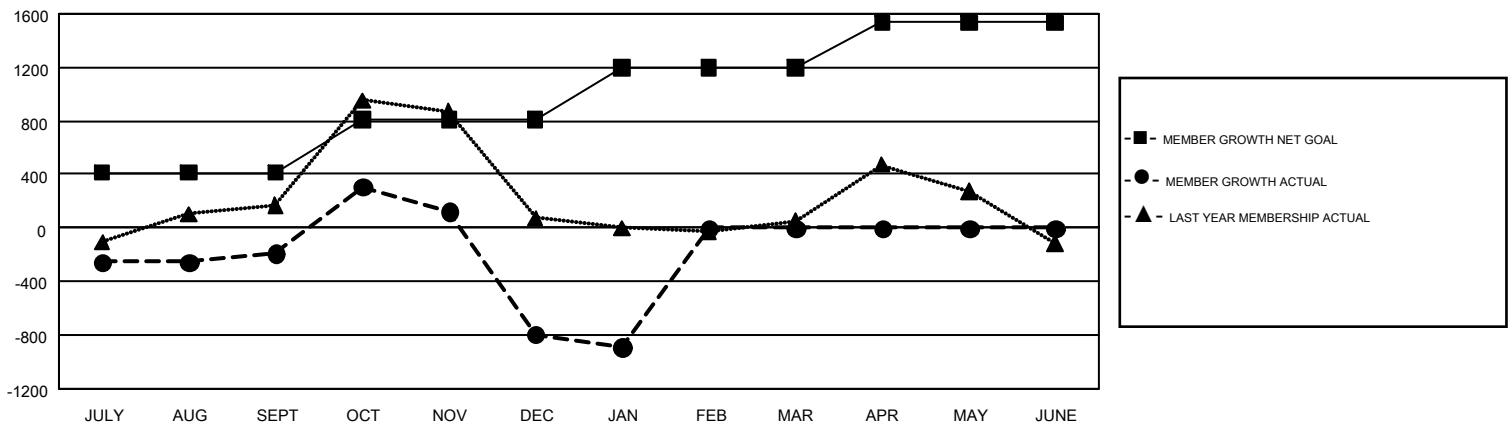
| Clubs | | | |
|-----------------------|---------------|-----------|---------------|
| RESULTS FOR 2017-2018 | | | |
| QUARTER | NEW CLUB GOAL | NEW CLUBS | DROPPED CLUBS |
| JULY/AUG/SEPT | 50 | 13 | 16 |
| OCT/NOV/DEC | 32 | 12 | 11 |
| JAN/FEB/MAR | 32 | 2 | 9 |
| APR/MAY/JUNE | 32 | 0 | 0 |

| Members | | | |
|-----------------------|------------------------|----------------------|---|
| RESULTS FOR 2017-2018 | | | |
| QUARTER | MEMBER GROWTH NET GOAL | MEMBER GROWTH ACTUAL | DROPPED MEMBERS ACTUAL (including transfers) |
| JULY/AUG/SEPT | 412 | 1,663 | 1,637 |
| OCT/NOV/DEC | 401 | 1,727 | 2,131 |
| JAN/FEB/MAR | 387 | 383 | 411 |
| APR/MAY/JUNE | 336 | 0 | 0 |

GOALS AND ACTUAL NEW CLUBS CUMULATIVE



GOALS AND ACTUAL MEMBERS CUMULATIVE



| | | |
|--|---|--|
| DROPPED CLUBS: 36 | 946 CLUBS OF 1,932 ADDED 1 OR MORE NEW MEMBERS | GENDER DISTRIBUTION MALE 28,219 (62.56%) FEMALE 16,888 (37.44%) |
| DROPPED MEMBERS DECEASED 275 CLUB CANCELLED 30 OTHER 3,874 TOTAL 4,179 | CLICK HERE FOR CUMULATIVE MEMBERSHIP DATA | TOTAL FAMILY UNIT MEMBERS 7,265 FAMILY MEMBERS PAYING HALF DUES 3,762 |